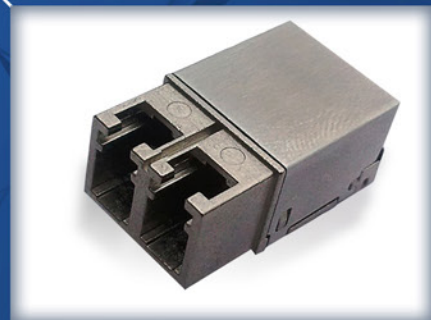


COTSWORKS®

TRANSCEIVER Product Matrix | 2016



749 Miner Road
Highland Heights, OH 44143
440.446.8800
ruggedfiberoptics.com

COTSWORKS Base Part Number		COTSWORKS Ordering Configuration		Form Factor	Data Rate Range	Fiber Type	Wavelength (nm)	Channel Configuration	Digital Diagnostics	Optical Interface	Ruggedization Option	Operating Temp Range A: -40 to 85 C	Operating Temp Range M: -40 to 95 C	Operating Temp Range Z: -55 to 95 C	Operating Temp Range S: -40 to 100 C	Module Serial Bus Address (RCP)	EMI Shield	RoHS Level	Post/Mount Option	ATEX Certification T = Certified	Electrical Interface	Transmitter Type	P _{out} min	P _{out} max	RX Type	Rx Sens Max	Link Budget min	Reach				
								X ₀	XX ₁	X ₂		X ₃			XX ₄	X ₅	X ₆	X ₇			(dBm)	(dBm)	(dB)									
RJ	RJ-155M-FX	RJ-155M-FX-DPLX-xx ₁ -x ₂ -x ₃ -x ₄ -x ₅ -x ₆ -x ₇	RJ	155Mbps	MMF	(): 1310	1Rx/1Tx	-													-T	1x10 SMT	LED	-19	-14	PIN	-33	14.5	2km on OM1			
	RJ-3G-TX2	RJ-3G-TX2-xx ₁ -x ₂ -x ₃ -x ₄ -x ₅ -x ₆	RJ	125Mbps-3Gbps	MMF	(): 850	2Tx	-														-	1x10 SMT	VCSEL	-9	-3	n/a	-	-	500m on ≥ OM2 50m on OM1		
	RJ-3G-TX2HP	RJ-3G-TX2HP-xx ₁ -x ₂ -x ₃ -x ₄ -x ₅ -x ₆	RJ	125Mbps-3Gbps	MMF	(): 850	2Tx	-															-	1x10 SMT	VCSEL	-5	-1	n/a	-	-	500m on ≥ OM2 50m on OM1	
	RJ-3G-RX2	RJ-3G-RX2-xx ₁ -x ₂ -x ₃ -x ₄ -x ₅ -x ₆	RJ	125Mbps-3Gbps	MMF	(): 850	2Rx	-		LC: Standard LC													-	1x10 SMT	n/a	-	-	PIN	-15	-	500m on ≥ OM2 50m on OM1	
	RJ-3G-LX	RJ-3G-LX-x ₁ -DPLX-xx ₁ -x ₂ -x ₃ -x ₄ -x ₅ -x ₆	RJ	125Mbps-3Gbps	SMF	(): 1310	1Rx/1Tx			LC: ARINC-801					n/a	n/a							-	1x10/12 SMT	FP	-5	1	PIN	-18	13	10km on SMF-28E	
	RJ-3G-EX	RJ-3G-EX-x ₀ -DPLX-xx ₁ -x ₂ -x ₃ -x ₄ -x ₅ -x ₆	RJ	125Mbps-3Gbps	SMF	(): 1310	1Rx/1Tx	(): None															-	1x10/12 SMT	FP	-1	3	PIN	-22	21	40km on SMF-28E	
	RJ-3G-ZX	RJ-3G-ZX-x ₀ -DPLX-xx ₁ -x ₂ -x ₃ -x ₄ -x ₅ -x ₆	RJ	125Mbps-3Gbps	SMF	(): 1550/CWDM	1Rx/1Tx	D: DDMI															-	1x10/12 SMT	DFB	-1	5	PIN	-22	21	80km on SMF-28E	
	RJ-5G-SX	RJ-5G-SX-x ₀ -DPLX-xx ₁ -x ₂ -x ₃ -x ₄ -x ₅ -x ₆ -x ₇	RJ	1-5Gbps	MMF	(): 850	1Rx/1Tx																-T	1x10/12 SMT	VCSEL	-5	-1	PIN	-14	9	500m on ≥ OM2 50m on OM1	
	RJ-10G-SX	RJ-10G-SX-xx ₁ -x ₂ -x ₃ -x ₄ -x ₅ -x ₆	RJ	8-10Gbps	MMF	(): 850	1Rx/1Tx																-	1x10/12 SMT	VCSEL	-5	-1	PIN	-10	5	500m on ≥ OM2 50m on OM1	
RJ-10G-LR	RJ-10G-LR-xx ₁ -x ₂ -x ₃ -x ₄ -x ₅ -x ₆	RJ	8-10Gbps	SMF	(): 1310	1Rx/1Tx	default															-	1x10/12 SMT	FP	-5	-1	PIN	-12	7	10km on SMF-28E		
RCP	RCP-5G-SX-DX	RCP-5G-SX-DX-LX-x ₂ -x ₃ -xx ₄ -x ₅	RCP	1-5Gbps	MMF	SX: 850	DX: 2TX, 2RX	-								(): C4																
	RCP-5G-SX-TX	RCP-5G-SX-TX-LX-x ₂ -xx ₄ -x ₅	RCP	1-5Gbps	MMF	SX: 850	TX: 4 Transmitters	-								XX ₁ : C0, C2, C6, C8, CA, CC, CE, D0, D2, D4, D6, D8, DA, DC or DE	n/a	n/a														
	RCP-5G-SX-RX	RCP-5G-SX-RX-LX-x ₂ -xx ₄ -x ₅	RCP	1-5Gbps	MMF	SX: 850	RX: 4 Receivers	-									(): C4															
	RCP-10G-SX-DX	RCP-10G-SX-DX-LX-x ₂ -x ₃ -xx ₄ -x ₅	RCP	1 - 10.3Gbps	MMF	SX: 850	DX: 2TX, 2RX	-																								
SFF	SFF-3G-TX2	SFF-3G-TX2-xx ₁ -x ₂ -x ₃ -x ₄ -x ₅ -x ₆ -x ₇	SFF	1 - 3.1875Gbps	MMF	(): 850	2Tx	-																								
	SFF-3GHP-TX2	SFF-3GHP-TX2-xx ₁ -x ₂ -x ₃ -x ₄ -x ₅ -x ₆ -x ₇	SFF	1 - 3.1875Gbps	MMF	(): 850	2Tx	-																								
	SFF-3G-RX2	SFF-3G-RX2-xx ₁ -x ₂ -x ₃ -x ₄ -x ₅ -x ₆ -x ₇	SFF	1 - 3.1875Gbps	MMF	(): 850	2Rx	-																								
	SFF-3G-LX	SFF-3G-LX-x ₁ -DPLX-xx ₁ -x ₂ -x ₃ -x ₄ -x ₅ -x ₆ -x ₇	SFF	100M-3.125Gbps	SMF	(): 1310	1Rx/1Tx	(): None																								
	SFF-4G-SX	SFF-4G-SX-x ₁ -DPLX-xx ₁ -x ₂ -x ₃ -x ₄ -x ₅ -x ₆ -x ₇	SFF	100M-4.25Gbps	MMF	(): 850	1Rx/1Tx	D: DDMI																								
	SFB-M-xx-AT	SFB-M-xx-AT-x ₁ -x ₂ -x ₃ -x ₄ -x ₅	SFF	125-155Mbps	MMF SMF	xx ₀ : 35 = 31Tx/55Rx 53 = 55Tx/31Rx	BiDi	-																								
	SFB-M-xx-DP	SFB-M-xx-DP-x ₁ -x ₂ -x ₃ -x ₄ -x ₅	SFF	125-155Mbps	MMF SMF		BiDi	-																								
	SFB-G-xx	SFB-G-xx-DP-x ₁ -x ₂ -x ₃ -x ₄ -x ₅	SFF	1.25Gbps	MMF SMF		BiDi	D: DDMI																								

COTSWORKS Base Part Number	100BA SE-X	100BA ASE-X	10GBA SE-R	ARINC AFDX (100Mbps)	ARINC 818 (1.0625Gbps)	ARINC 818 (2.125Gbps)	ARINC 818 (3.1875Gbps)	1x Fibre Channel (1.0625Gbps)	2x Fibre Channel (2.125Gbps)	Infiniband (2.5Gbps)	4x Fibre Channel (4.25Gbps)	8x Fibre Channel (8.5Gbps)	SONET OC-3/ SDH STM-1 (155Mbps)	SONET OC-12/ SDH STM-4 (622Mbps)	SONET OC-48/ SDH STM-16 (2.5Gbps)	SONET OC-192/ SDH STM-64 (10Gbps)	HOTLINK (400Mbps)	XAU1 (4x 3-125Gbps)	sFPDF (3-125Gbps)
RJ-155M-FX	•			•									•						
RJ-3G-TX2	•			•									•						
RJ-3G-TX2HP	•			•									•						
RJ-3G-RX2	•			•									•						
RJ-3G-LX	•			•									•						
RJ-3G-EX	•			•									•						
RJ-3G-ZX	•			•									•						
RJ-5G-SX	•			•									•						
RJ-10G-SX																			
RJ-10G-LR																			
RCP-5G-SX-DX	•			•															
RCP-5G-SX-TX	•			•															
RCP-5G-SX-RX	•			•															
RCP-10G-SX-DX	•			•															
SFF-3G-TX2	•			•															
SFF-3GHP-TX2	•			•															
SFF-3G-RX2	•			•															
SFF-3G-LX	•			•															
SFF-4G-SX	•			•															
SFB-M-xx-AT	BX																		
SFB-M-xx-DP	BX																		
SFB-G-xx	BX																		