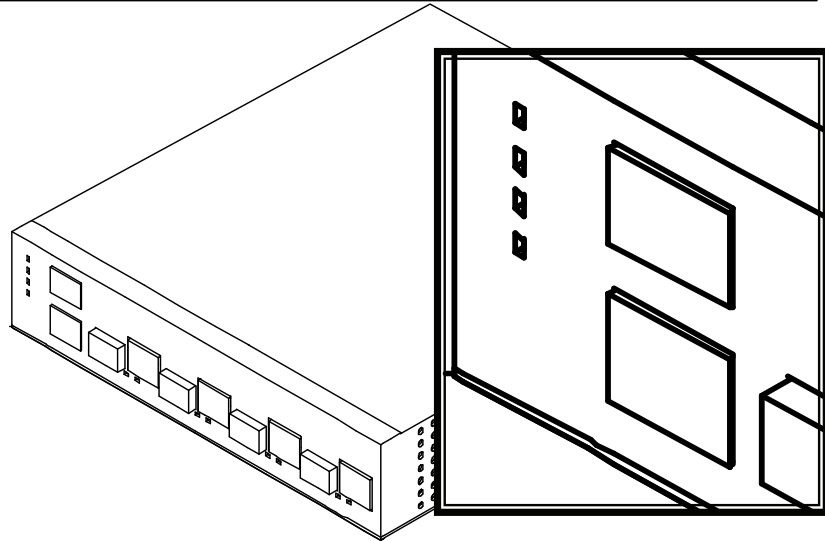


USER GUIDE



CDM Network Programmer for CCT100x

**Remote firmware update for CCT100x, a 100BaseT
To 100BaseX Ethernet Media Converter With Com-
munications Diagnostics Module**

COTS

Champion Optical Technology Services™

Notice

© Copyright Champion Optical Technology Services 2006. All rights reserved.

Reproduction, adaptation, or translation of this manual is prohibited without prior written permission of Champion Optical Technology Services, except as allowed under copyright laws.

CCT100xCDM Update Manual 1d1

First Edition (March 2006)

Handling Information

Caution

CCT100x uses Class 1 laser devices. You should never stare directly at these devices when they are inserted in the CCT100x module and it is powered on.

Always use a grounded outlet when powering CCT100x.

Warning

Before you work on any equipment be aware of the hazards involved with electrical circuitry. You should be familiar with standard practices for preventing accidents. Disposal of this product should be handled according to national and local laws and regulations.

Storage

This device should be stored in a -4 to 149° F (-20 to 65° C) environment observing proper electrostatic precautions.

Terms & Conditions

Warranty

Effective January 1, 2006:

Champion Optical Technology Services ("COTS") warrants this product from the date of purchase to the original purchaser for 5 years. The component thereof, but excluding any software incorporated therein (referred to collectively as the "products" or "equipment") will be free from defects in material and workmanship. THIS WARRANTY IS IN LIEU OF ALL OTHER WARRANTIES, EXPRESSED OR IMPLIED, AND CONSTITUTE THE PURCHASER'S SOLE AND EXCLUSIVE REMEDY WITH RESPECT TO THE EQUIPMENT.

In the event that COTS receives returned equipment with defects in material or workmanship, it will, at its option, repair or replace the equipment to whatever extent it deems necessary to restore the equipment to proper operating condition. All material and labor required for such a restoration will be provided at no charge when equipment with material or workmanship defects is properly returned postage or freight prepaid under the procedure described herein within their applicable warranty period starting from date of purchase. DATED PROOF OF PURCHASE OR COTS RMA NUMBER MUST BE PROVIDED WITH THE RETURNED EQUIPMENT.

Limitations

Not covered under the warranties are: failures due to accident, misuse, abuse, neglect, improper installation, product modification, or unauthorized repair or attempted repair, or shipping damage. COTS HEREBY DISCLAIMS ANY AND ALL EXPRESSED OR IMPLIED WARRANTIES OF MERCHANTABILITY AND FITNESS FOR A PARTICULAR PURCHASE HOWEVER ARISING. IN NO EVENT SHALL COTS BE LIABLE FOR ANY INCIDENTAL, CONSEQUENTIAL OR SPECIAL DAMAGES OR FOR COMMERCIAL LOSSES FROM ANY CAUSE INCLUDING, BUT NOT LIMITED TO, LOST PROFITS OR REVENUES, REGARDLESS OF NOTICE.

THE PRODUCTS ARE NOT AUTHORIZED FOR USE AS CRITICAL COMPONENTS IN LIFE SUPPORT DEVICES OR SYSTEMS OR FOR USE IN OTHER CRITICAL APPLICATIONS WITHOUT THE EXPRESS WRITTEN APPROVAL OF THE PRESIDENT OF COTS . LIFE SUPPORT DEVICES OR SYSTEMS ARE THOSE WHICH ARE INTENDED TO SUPPORT OR SUSTAIN LIFE AND WHOSE FAILURE TO PERFORM CAN REASONABLY BE EXPECTED TO RESULT IN A SIGNIFICANT INJURY TO OR DEATH OF THE USER. CRITICAL COMPONENTS ARE THOSE COMPONENTS WHOSE FAILURE TO PERFORM CAN REASONABLY BE EXPECTED TO CAUSE FAILURE OF A LIFE SUPPORT DEVICE OR SYSTEM OR AFFECT ITS SAFETY OR EFFECTIVENESS. CRITICAL APPLICATIONS ARE THOSE APPLICATIONS THAT MAY INVOLVE POTENTIAL RISK OF DEATH, PERSONAL INJURY OR SEVERE PROPERTY OR ENVIRONMENTAL DAMAGE.

Terms & Conditions (Continued)

Except as set forth herein, COTS makes no warranties, expressed or implied, and COTS disclaims and negates all other warranties including without limitation, implied warranties of merchantability, fitness for a particular purpose and conformity to models or samples. In no event shall COTS be liable for any indirect, special, incidental, or consequential damages.

Customer expressly understands and agrees that COTS does not warrant that the product is free of claims of patent infringement by any third party. COTS hereby disclaims any such warranty or indemnification against patent infringement.

Return Procedures

No product may be returned for any reason without the prior approval of COTS. Customer is responsible for returning products to COTS at customer's risk and expense. Prior to returning product(s) to COTS for warranty service, customer must obtain a Return Material Authorization (RMA) number from COTS by calling customer service at 440-446-8800. If COTS elects to replace such part pursuant to the applicable Warranty (see above), replacement parts will be shipped at COTS' expense, subject to availability, via a common air delivery service after the RMA number is obtained. Replacement parts may be refurbished or repaired. COTS shall not be responsible for failure of the delivery service to make on-time delivery. Customer must ship the product(s) to COTS in the original packaging, prepaid and insured, with the RMA number clearly identified on the packaging. Returned products should be shipped to the following address: COTS, Attn: RMA Dept.-RMA No. _____, 749 Miner Road, Highland Heights, OH 44143. Any product(s) returned to COTS shall become the property of COTS. If COTS determines that failure of the product(s) was not a result of a defect in materials or workmanship, COTS reserves the right to charge customer for parts and labor at COTS' then current labor rate. COTS will advise customer prior to assessing these charges. Except as explicitly provided herein, customer is not authorized to return product to COTS. If COTS elects to accept unauthorized returns, COTS may, in its sole discretion, charge a restocking fee for parts returned.

Table of Contents

Setup	1
Network Status	2
Establishing Connectivity	3
Firmware Update	4
Completed Update	5
Obtaining Technical Assistance	5

Setup

1. Connect a Category 5 or better cable from the CCT100x “Network” port to any port on the network HUB/Switch.
2. Connect a console cable from the CCT100x “Console” port to the host PC serial port.
3. Make sure the host PC is connected to a network HUB/Switch.
4. Launch “HyperTerminal” on host PC (Start->Comm...->HyperTerminal).
5. Configure HyperTerminal with the following setting:
Comport=COM1; Baud=9600; Data-bits=8;
Parity=None; Stop-bit=1; FlowCtl=None
6. Power the CCT100x.
7. Verify that the HyperTerminal displays COTS logo, Figure 1 shows

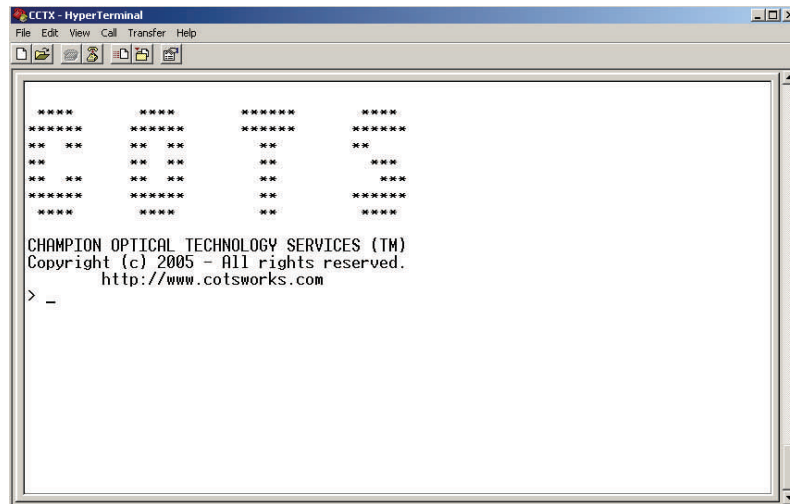


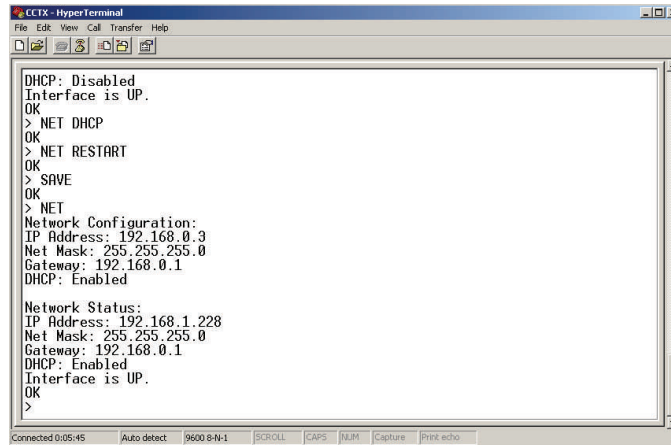
Figure 1

At the HyperTerminal prompt type the following, *one line at a time*:

```
NET DHCP
NET RESTART
SAVE
NET
```

Cont.

Network Status



```
CCIX - HyperTerminal
File Edit View Call Transfer Help
DHCIP: Disabled
Interface is UP.
OK
> NET DHCP
OK
> NET RESTART
OK
> SAVE
OK
> NET
Network Configuration:
IP Address: 192.168.0.3
Net Mask: 255.255.255.0
Gateway: 192.168.0.1
DHCIP: Enabled

Network Status:
IP Address: 192.168.1.228
Net Mask: 255.255.255.0
Gateway: 192.168.0.1
DHCIP: Enabled
Interface is UP.
OK
>
```

Figure 2

After typing the “NET” command, record the IP address listed under “Network Status.”

You may change your IP address settings here as well using the “DHCIP” command. For more information, type “HELP.”

Establishing Connectivity

Launch “CMD Network Programmer”
(Start->All-Programs ->CDMNETPROG)

Note: the CDM Network Programmer is available from COTS

Type the “IP address” into the IP address field you recorded and click the Ping button to confirm that the CCT100x can be seen by the CDM Network Programmer application, shown below.

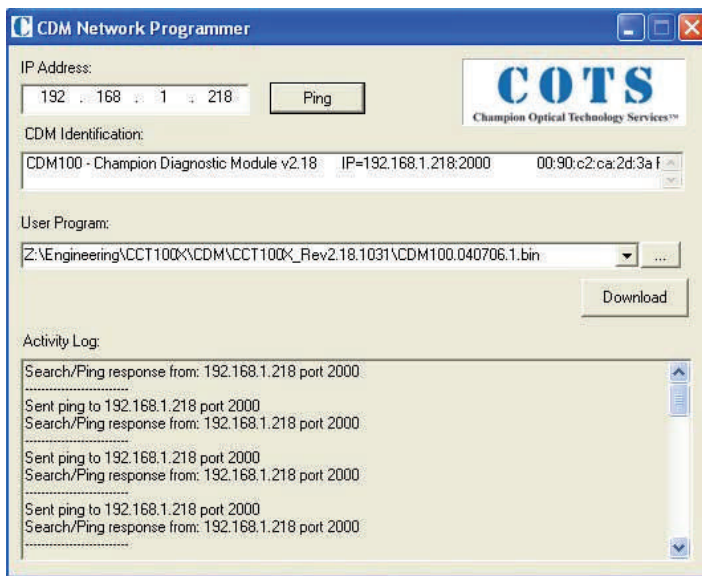


Figure 3

Click the file browser icon to locate the “bin” file you need to download to the CDM and click the “Download” button. (Current “bin” file is: CDM100.040706.1.bin)

This should start the process of downloading the new “bin” file into CCT100x CDM board.

Firmware Update

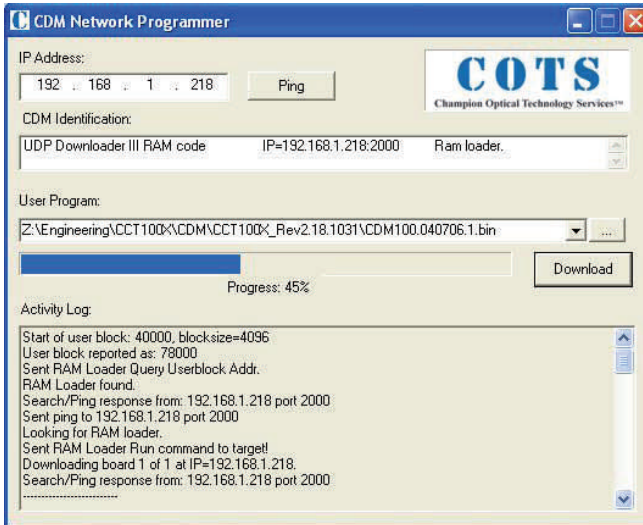


Figure 4

The Activity Log shows download in progress

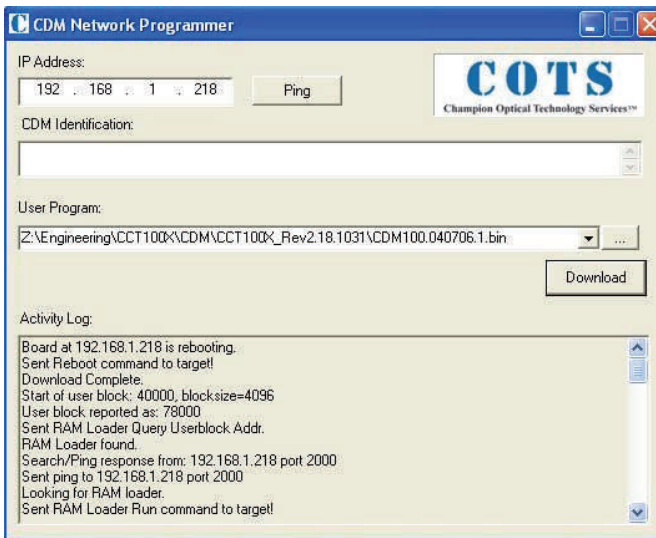


Figure 5

The Activity Log shown shows a successful download

Completed Update

To retrieve the Firmware Version from the CCT100x CDM use HyperTerminal and type: "MFG" at the HyperTerminal prompt, It should reply with:

```
> mfg
Firmware Version: 2.18.1031
Serial Number: 912400014
Technician: RJD
Mfg Date: 3/8/2006
Number of Ports: 24
OK
>
```

Steps for updating CCT100x internal controller firmware.

To program all ports, type the following command at HyperTerminal prompt:

PROGRAMALL <Enter>

This completes the CDM firmware update steps.

Obtaining Technical Assistance

Contact Tech Support	
Phone: 440-446-8800	Fax: 440-815-2204
	Info@cotsworks.com
Hours of Operation	
9am-6pm, EST	Monday - Friday

COTS

Champion Optical Technology Services™

749 Miner Rd. Highland Heights, OH 44143

www.cotsworks.com

info@cotsworks.com

Phone: 440-446-8800

Fax: 440-815-2204